



Safety Instructions

0, 1, 2, 4, 6, 7, 8, 9, 10, 11, 15, 18, 20, 22, 25, 26, 27



Info Hotline



+49 (0) 5041 998 389

Mon. - Do. 7⁰⁰ - 20⁰⁰
Fr. 7⁰⁰ - 17⁰⁰

Paulmann Licht GmbH
Quezinger Feld 2
31832 Springe
Germany

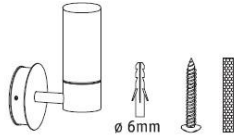
www.paulmann.com

Art.-Nr.: 708.39

(+MA173)POM08/16



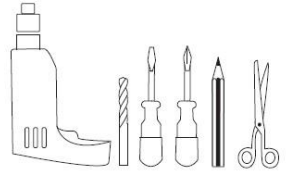
IP44



ø 6mm

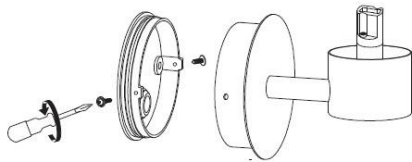


not incl.
1x33W
G9



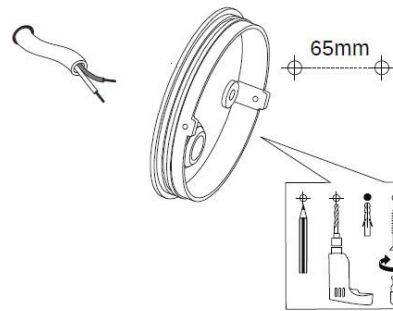
A

Safety Instructions
Nr. 0

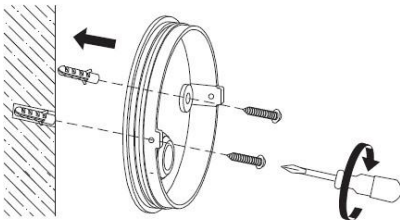


B

Safety Instructions
Nr. 0, 1, 2

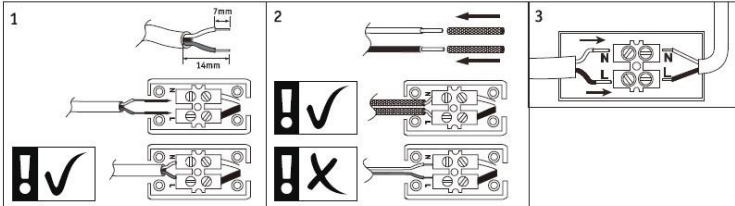
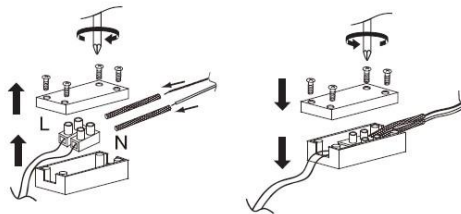


C

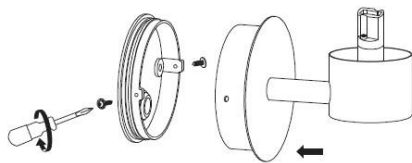


D

Safety Instructions
Nr. 0, 1, 4

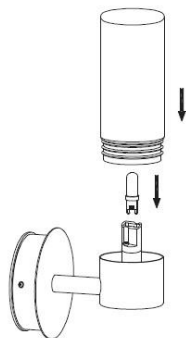


E



F

Safety Instructions
Nr. 0, 1, 4



G

Safety Instructions
Nr. 9

